



Atlanta,  
Park Estate, St. Brelade, JE3 8EQ

Asking price £1,575,000



**FREEHOLD** - Reside are pleased to present this luxury modern Bungalow in Park Estate, St. Brelade.

Nestled in the prestigious Park Estate, just moments from St. Brelade's vibrant shops, restaurants, and the stunning bay, this beautifully designed modern bungalow offers an exceptional standard of living in a prime coastal location.

Boasting four spacious bedrooms, including two with en-suite bathrooms, this property perfectly balances style and comfort. The highlight is the expansive chef's kitchen, fitted with the latest high-end Siemens and Bosch appliances, ideal for culinary enthusiasts. The separate, elegant lounge provides a tranquil space to relax, while both the kitchen and lounge open effortlessly onto a generous entertaining area—perfect for hosting guests.

Additional features include a study, a well-equipped utility room, and underfloor heating throughout for year-round comfort.

The outdoor space is equally impressive, with a private, mature garden offering peace and seclusion, along with a sparkling swimming pool for those warm summer days. With parking for up to five cars, this property combines convenience with luxury.

This is a rare opportunity to secure a dream home in one of St. Brelade's most desirable areas.

RES288



reside.je



info@reside.je



07797737773





reside.je



info@reside.je



07797737773





reside.je

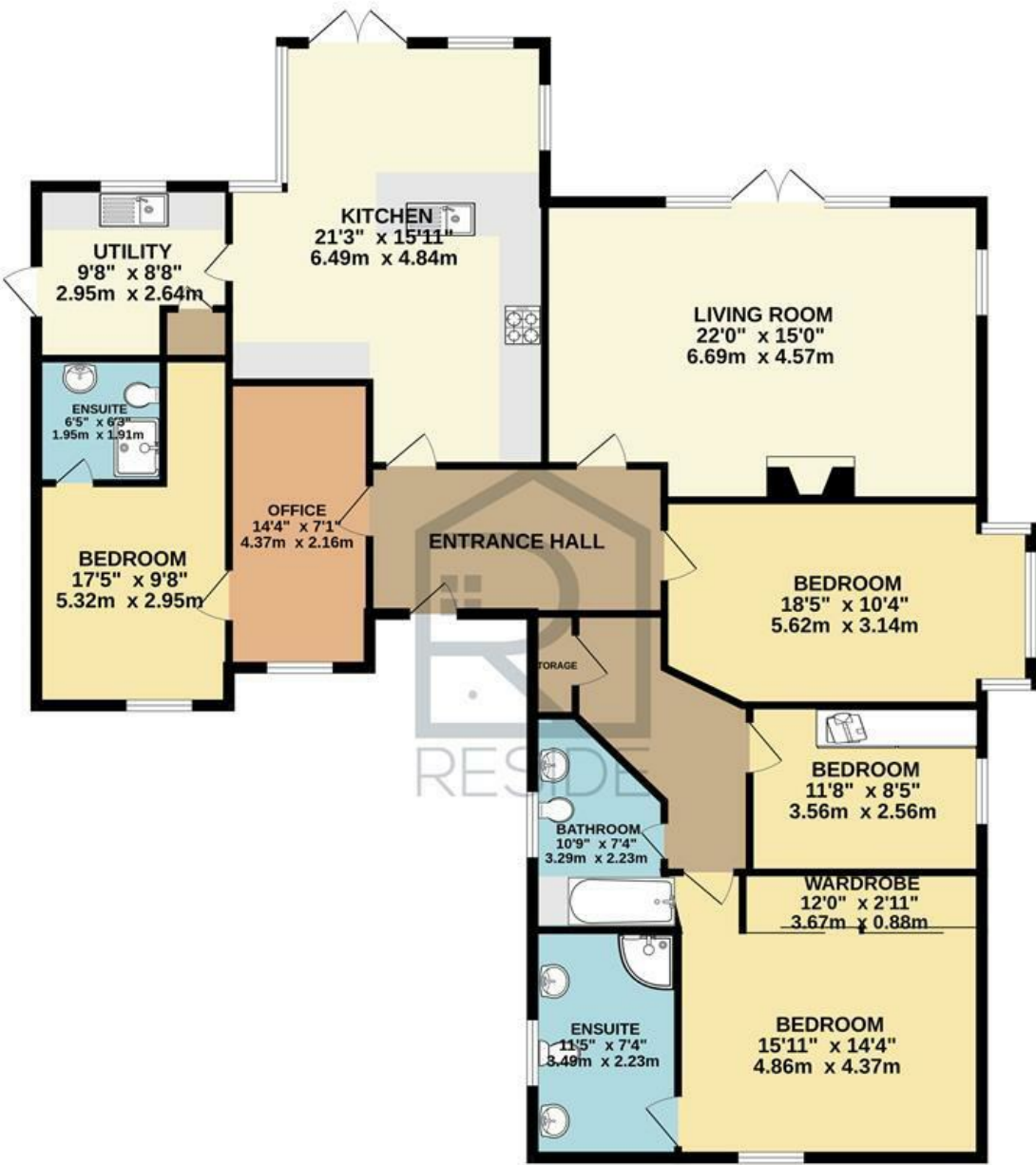


info@reside.je



07797737773

GROUND FLOOR  
1713 sq.ft. (159.1 sq.m.) approx.



TOTAL FLOOR AREA: 1713 sq.ft. (159.1 sq.m.) approx.

Whilst every attempt has been made to ensure the accuracy of the floorplan contained here, measurements of doors, windows, rooms and any other items are approximate and no responsibility is taken for any error, omission or mis-statement. This plan is for illustrative purposes only and should be used as such by any prospective purchaser. The services, systems and appliances shown have not been tested and no guarantee as to their operability or efficiency can be given.  
Made with Metropix ©2024



## Key Information

- 4 Bedroom luxury bungalow
- 3 modern bathrooms
- Nestled in Park Estate St Brelade
- Beautiful manicured garden with swimming pool
- Parking for 5 with car port
- Close to the bay and many local amenities

## Directions

